



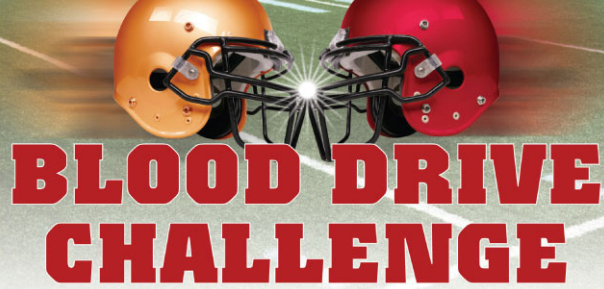
# k.e.e.p.i.n.g connected



southeastern community blood center's donor update

issue 37 • october 2011

BLUE CROSS AND BLUE SHIELD OF FLORIDA CLASSIC



## Florida A & M Students Don't Get Rattled Over Competition



The first FAMU vs. B-CU Blood Drive Challenge is well underway and donors on each side of the "field" are donating blood and showing the community what color they bleed.

The Challenge, which began in early October, is bringing the FAMU - BC-U rivalry from the football field to the bloodmobiles to see which school can collect the most blood leading up to this year's Blue Cross Blue Shield of Florida Classic November 19 in Orlando. The winner will be announced at a luncheon prior to the event, with the winning university taking home a trophy...along with bragging rights.

Thus far, multiple blood drives have been held at, or for, each school in order to give fans a chance to show their spirit. If you are a FAMU fan interested in doing your part to take home the "W", visit the bloodmobile on campus by "The Set" on Tuesday, Nov. 8 from 10 am - 4 pm.

Don't forget to check the rattler link at [www.scbcinfo.org](http://www.scbcinfo.org) for blood drives throughout the school year.

Jump Aboard. Save Lives. Give Blood.



## UPCOMING EVENTS

# GIVE BLOOD

Donor T-Shirt  
Oct. 24 - 31

### Freaky Friday Party, Oct. 28

Donate blood at your nearest donor center\*\* and enjoy to-die-for treats and terrifying decor. Vote for your favorite staff costume or pumpkin carving contest entry! BC Spas will be in Tallahassee to pamper donors.



### Beginning in Nov.

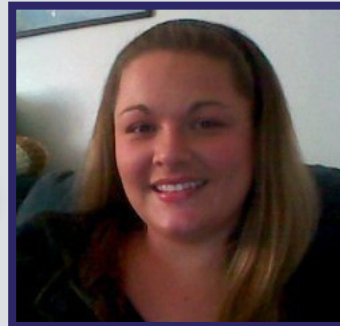
Give blood and receive a "Thanks for Giving" reusable harvest tote bag. Help stock our shelves before you stock yours. See [www.scbcinfo.org](http://www.scbcinfo.org) for exact time frame.



\*\*Marianna center closed 10/28

## A Donor's Dedication

One donor's story about why she gives



“On October 21st, I hit the 2 gallon mark with SCBC. I started donating blood in 2002 as a freshman at FSU. When I found out I had type O blood and was a universal donor, I felt like it was my responsibility to donate blood. For the past two years or so, I have been doing the double-red cell. It makes me feel good as a person knowing that I am able to potentially save someone's life. Through SCBC's newsletters, I have decided to sign up

with "Be the Match" in hopes that I will be a bone marrow match for someone who needs it! I'm a firm believer in helping when you can because you never know when you are going to be the one on the other end needing help. I am thankful to SCBC for helping the people of this community!”

*Tarsha Sandesky* • Tallahassee Donor

## brooks county high school blood drive

The next generation of donors does what it takes at their October 7 blood drive to make a difference in their community.



Southeastern Community Blood Center - Marianna, FL - Tallahassee, FL - Douglas, GA - Thomasville, GA  
800.722.2218 - [www.scbcinfo.org](http://www.scbcinfo.org) - [www.facebook.com/scbcinfo](http://www.facebook.com/scbcinfo)